

Tooling Control Process

Issue 4: October 2005

Table of Contents

1	Purpose	2
2	Scope	2
3	Definitions and Abbreviations	2
4	Process flowcharts	3
5	Supporting notes	4
5.1	Tooling Register	4
6	Change history	4

Tooling Control Process

1 Purpose

- To identify, record, store and dispose of tooling.

2 Scope

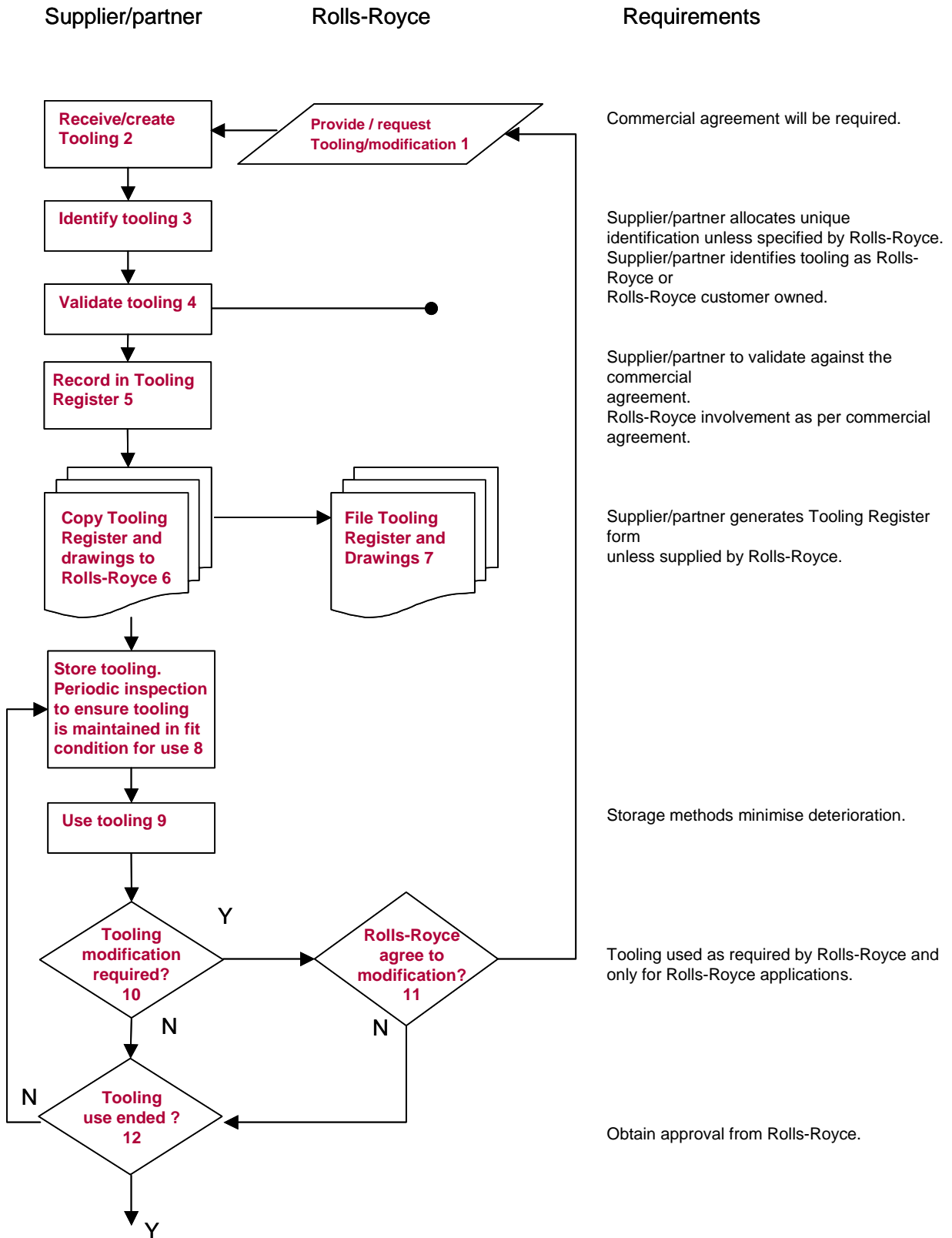
- Tooling owned by Rolls-Royce or its customers (this includes shared ownership).

3 Definitions and Abbreviations

- Please refer to SABRe Definition Index & Glossary of Terms (Acronyms).

Tooling Control Process

4 Process flowcharts

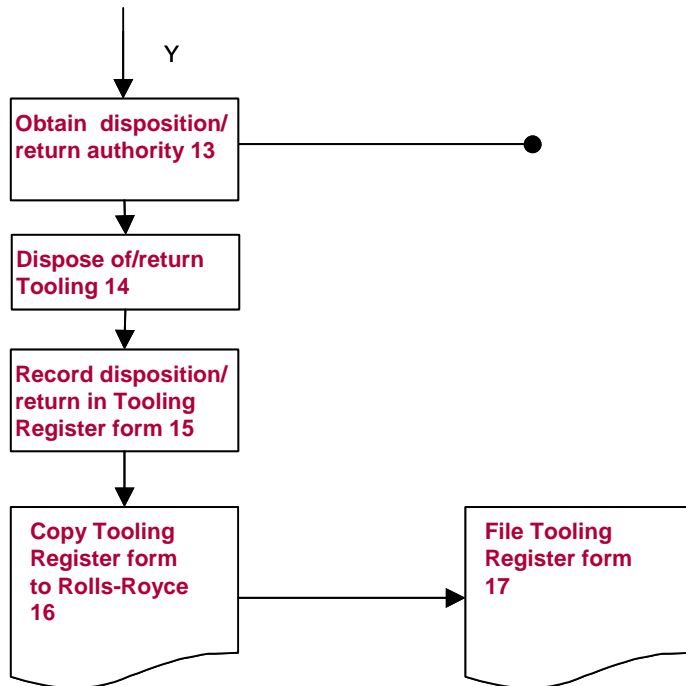


Tooling Control Process

Supplier / partner

Rolls-Royce

Requirements



Supplier / partner only disposes of tooling with written authority of Rolls -Royce.

5 Supporting notes

5.1 Tooling Register

The tooling register shall contain as a minimum the following information:

- Tool number and description
- Part number and issue date
- Supplier's name / identification
- Ownership (Rolls-Royce, contract, customer etc)
- Project application
- Storage location
- Rolls-Royce purchase order / contract that authorized the tooling.
- Where tooling is provided or requested by Rolls-Royce but is the property of a Rolls-Royce customer then such tooling is subject to the controls placed on Rolls-Royce by its customer. These will be specified by Rolls-Royce.
- Records (even beyond tooling disposal) shall be maintained for the period specified by Rolls-Royce.

For Rolls-Royce and Rolls-Royce Customer owned tooling an annual stock take audit must be carried out. Rolls-Royce personnel may undertake this activity.

6 Change history

Revision	Date	Description of Change	Approved by
Issue 1.0	23rd Aug 00	First issue	J. A. Calder.
Issue 2.0	1st Jan 02	Changes to accommodate the needs of the global Rolls-Royce community	J. A. Calder.
Issue 3.0	1st Jul 03	Changes to accommodate requirements of Rolls-Royce Marine (Submarines).	R. Harrison.
Issue 4.0	1 st . Oct 05	Minor alterations to align with SABRe's Re-structuring.	K. R. Angus.